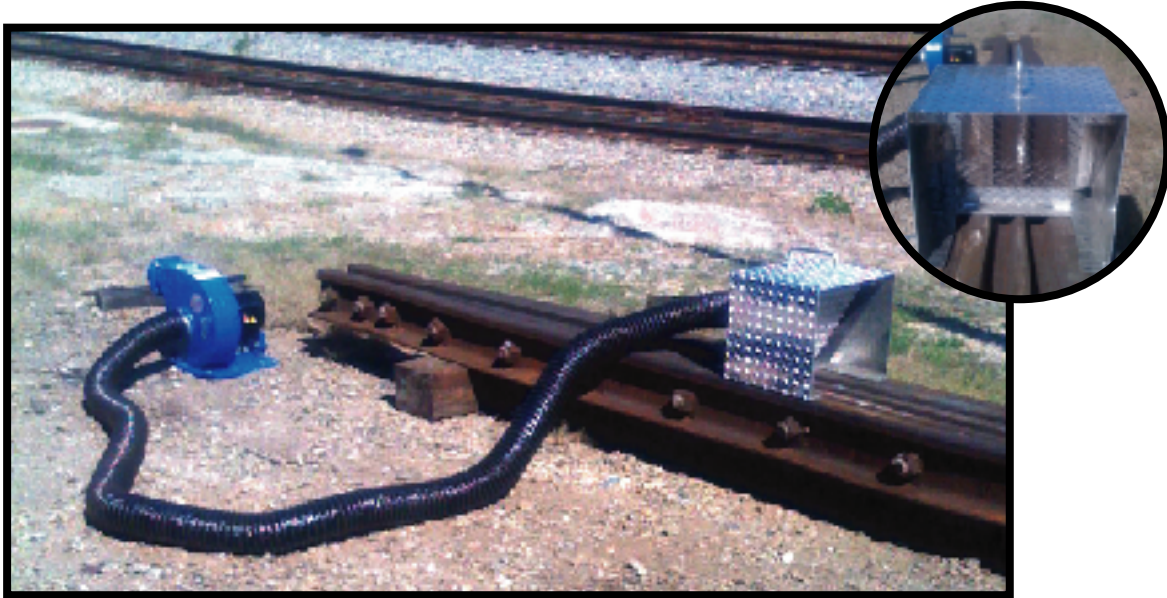


# Habco FE1200P

## Track Welding Fume Extractor

### BUILT AND DESIGNED FOR THE VIGORS OF RAILROAD MAINTENANCE



- The **ULTIMATE** in **WELDER SAFETY**
- **EXCEEDS OSHA SAFETY STANDARDS** for **MANGANESE EXPOSURE LIMITS**
- **PROVIDES PROTECTION** for **WELDING, GRINDING AND ARC GOUGING** Processes
- **LIGHTWEIGHT / PORTABLE**

NORFOLK SOUTHERN CORP. - CLASS ITEM # 480-327821

**HABCO FE1200P SPECS:**



Hose Length: 15 feet (standard)  
Output: 1200 CFM  
Blower (1 HP): 37 lbs.  
Shroud (12" x 12" x 16"): 11 lbs  
Truck Movable

**For your FREE demonstration or to learn more about our Habco FE1200P Fume Extractor, please contact us.**

50 Venture Drive, Unit #9, Toronto, Ontario M1B 3L6 • Tel: 416-754-3118 • Fax: 416-754-3698

**24 Hour "Job Right" Toll Free Hot Line: 1-800-463-9563**

